

FOR SALE

POA

Located in a highly visible position on Laleham Road, The Bull Inn occupies a 0.2-acre site with dual frontage and excellent connectivity, including easy access to Shepperton station and local amenities. The site includes a generous level of parking.

The property offers flexible internal space of approx 2,303 sq ft, with the ground floor arranged as two separate bar areas (including a commercial kitchen). The First floor currently provides six lettable rooms (4 with ensuite facilities), making it ideal for a range of uses or redevelopment opportunities (subject to consent).

VIEWINGS BY APPOINTMENT ONLY

CONTACT

David Gibbon



david.gibbon@tgeproperty.co.uk



0208 226 0050

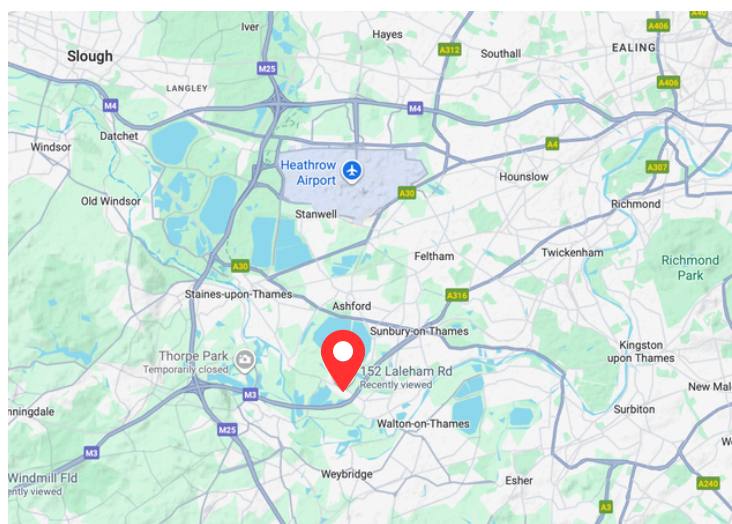


www.tgeproperty.co.uk

The Bull Inn, Laleham Rd, Shepperton, TW17 ODB

◆ PRELIMINARY DETAILS - AWAITING APPROVAL

- ◆ Corner plot totalling 8,712 sq ft (internal Area 2,303 sq ft)
- ◆ 16 Parking Spaces
- ◆ Bar and restaurant/ function room
- ◆ 6 First floor bedrooms - 4 ensuite



0.20 ACRES

TGE
PROPERTY

LOCATION

| | | |
|--------------------|---|-----------|
| Shepperton Station | - | 0.7 miles |
| Shepperton Studios | - | 1 miles |
| A308 | - | 3.2 miles |

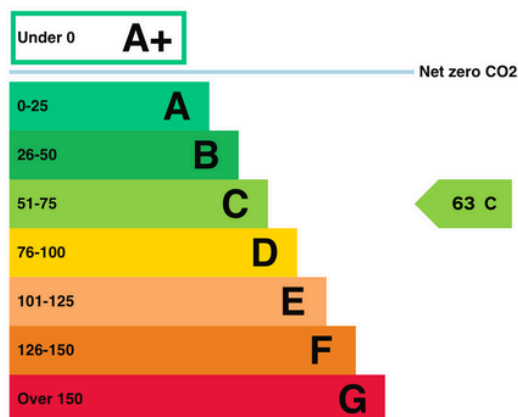


RATES

The property is situated in an area administered by Spelthorne Borough Council. The 2023 Rateable Value has been assessed at £11,000. The ancillary accommodation falls within Council Tax Band D.

EPC

The property has an Energy Performance Certificate (EPC) rating of C.

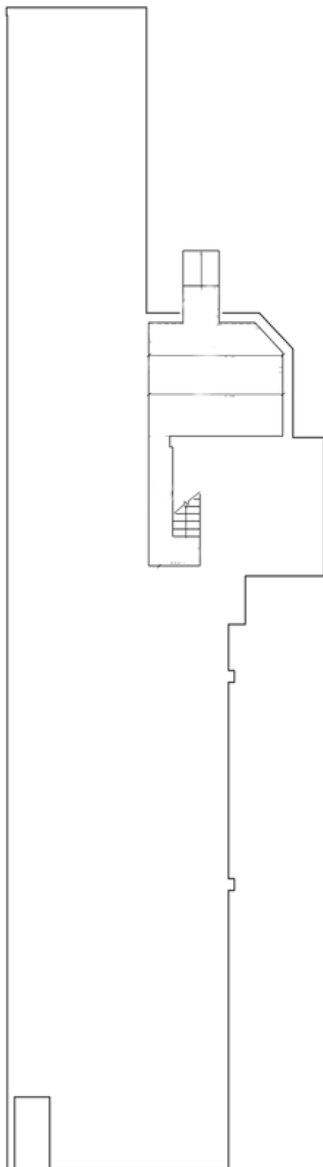


FLOOR PLAN

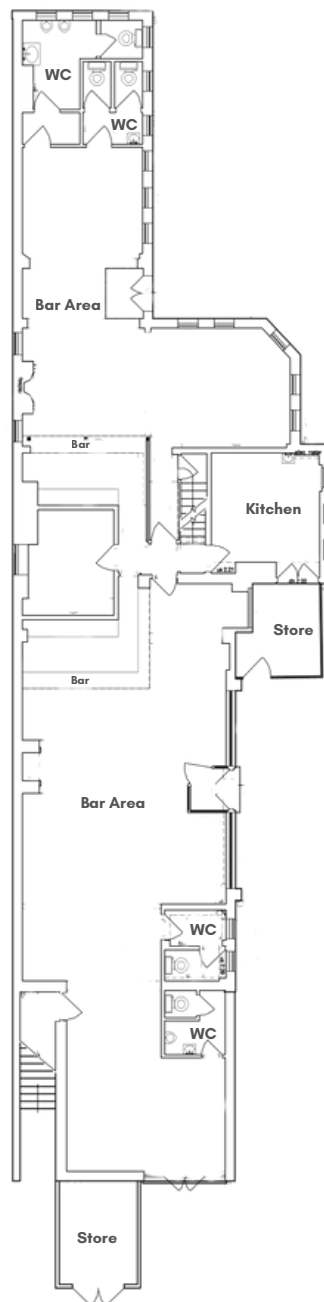
TGE
PROPERTY

Total Internal Area = 2,303 sq ft

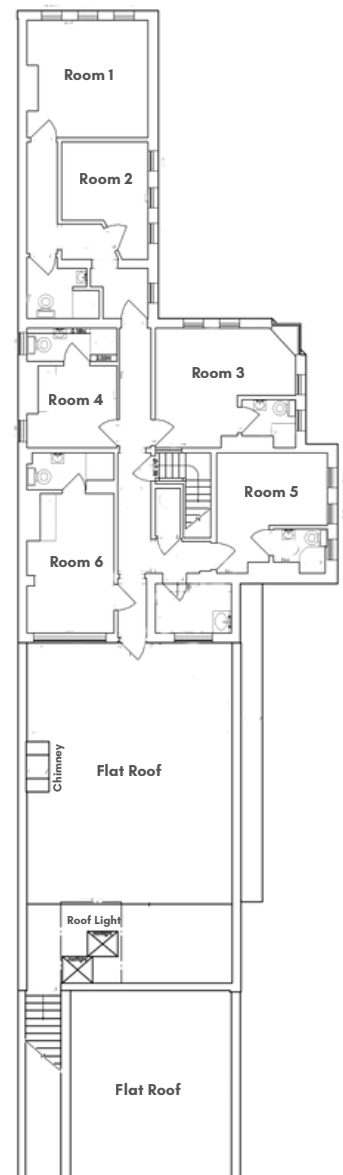
Basement (Un-inspected)



Ground Floor



First Floor



*Property particulars created January 2026.
Details correct at time of distribution.*